



The church of Saint-John the Baptist in Saint-Jean-de-Luz welcomes you and wishes you a nice visit!



« L'ADORATION DES MAGES » PAINTING BY J. RESTOUT

On the front side, on the right, J. Restout's painting dates from 1727. It shows the Epiphany celebration. In Saint-Jean-de-Luz, since XVI th century, parishioners have been celebrating this feast in January to allow fishermen, who were at sea in June, to venerate the Holy Sacrament.

THE PULPIT

In the old times, the priest preached from the top of the pulpit to be heard by everybody. A winding staircase leads to the dark wood pulpit, which is supported by 4 winged monsters and represents Saint-John The Baptist and 4 evangelists.

THE 'BANC D'OEUVRE' and the 'Christ's trial' painting (XVII °)

During special ceremonies (Epiphany, Easter, Saint-John's feast) , the town's representatives sit on the 'banc d'oeuvre' (special bench on the right side) . Above, a painting representing Christ's trial by the pharisees is hanging.



BAPTISMAL FUNDS

Facing the main door, baptismal funds have been dug in the walls. Dating from the XVIII th century, they evoke Jesus christening by Saint-John the Baptist . On the vault, bask inscriptions tell about the meaning of this sacrament ie 'the child enters the Christian community'.

STATIONS OF THE CROSS

Maxime Real del Sarte, living in Saint-Jean-de-Luz, carved these 14 polychrome panels in 1950.

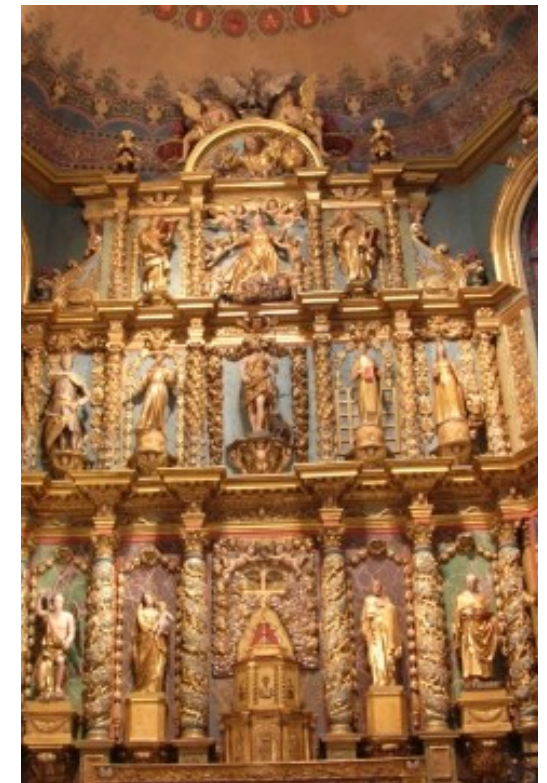
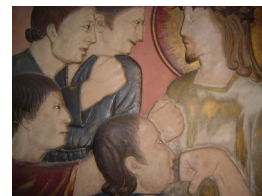
LOUIS XIV'S WEDDING - JUNE 1660 9TH

The wedding of Louis XIV , King of France , to Marie-Thérèse , Infanta of Spain , is a clause of the Pyrenees' treaty (signed in 1659 on the Pheasants' island on the Bidassoa river) which put an end to the bloody 30 years' long war.

Why Saint Jean de Luz ?

Saint-Jean-de-Luz has been chosen because it was a very rich town during the XVI th and XVII th centuries, thanks to fishing activities. Moreover, it is the closest town from Spain.

The door, through which the couple entered the church on this wedding day, doesn't exist any longer; it has been walled up in 1669 when the new entrance has been built .



Relais paroissial de Saint Jean de Luz
9-11 rue de l'église
05 59 26 08 81 -
paroisseluz@gmail.com
www.paroissespo.com



Dear friends

We are happy to welcome you in our church. Thanks to stop inside and better know it !

It's a precious heritage and it holds the mark of old inhabitants' know-how. Moreover, it witnesses their faith in God, Father, Son and Holy Spirit, which is celebrated here, all year long, by the Christian community.

In this place, we address our joys and sorrows to God; we group ourselves to live precious moments of our private, family and social life.

Respecting this place, through silence, discretion and smart behaviour, you respect each of us and above all God in which we believe.

TO SEE BETTER...

*turn the light on (1 EUR for 5 mn)
at the front right side of the church.*

A CHURCH FROM THE XVII^e CENTURY

According to archives, a church was there on the XIIth century but very few things remain from the original building. During the XVth and XVIth centuries, Spanish armies came to set the town on fire on several occasions; the present church dates from the XVIIth century, when it has been enlarged. At Louis XIV's wedding in 1660, works were still in progress and lasted till the XIXth century.

The ALTARPIECE « GOD'S DOMAIN »

It's the decorated, sculpted part behind the altar, where the Eucharist is celebrated. It's baroque, golden wood - not to show the church's wealth but to witness God's presence and beauty. Among most important pieces, you may notice:

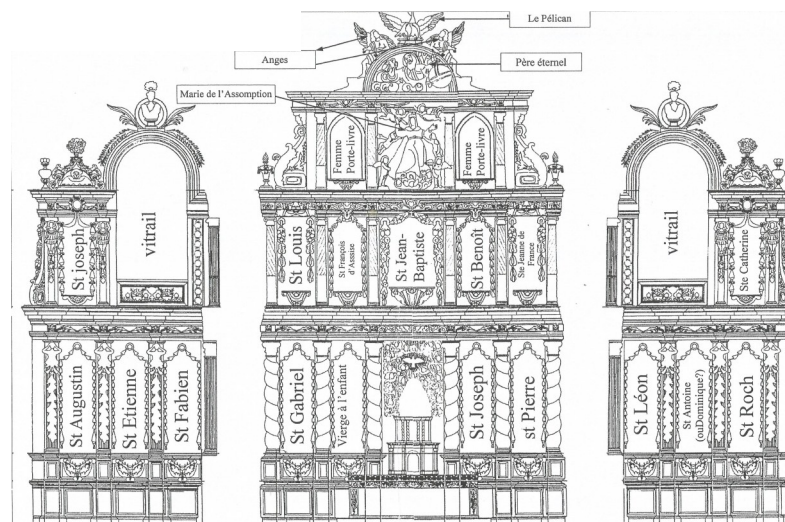
the tabernacle, the holiest place in the church which contains the real presence of Christ

in the middle, Saint John the Baptist, the town's patron saint, who announced God's son

Mary's assumption, surrounded by angels

the Eternal Father blessing the world, surmounted by a pelican, symbol of God's love for the whole humanity

YOU WILL FIND BELOW THE STATUES OF THE ALTAR AND THEIR NAMES.



THE NAVE

When entering the church, you are at first struck by the nave's unique volume, the chestnut vault of which looks like a ship's hull. In front of the main door, a boat named 'Empress Eugenie' - Napoleon III's wife- is hanging from the ceiling on a metallic thread. It has been given to the church in 1865 by the Soudre's family, a well known shipowner from Saint-Jean-de-Luz.

THE TIERED BALCONIES

Upstairs, 3 floors of oak wood balconies from either side of a majestic organ (organ's renovation completed in June 2024).

Up to the 1960s, men only could attend from the balconies; women stayed in the body of the church and sat above their family's gravestone.

The balconies were a solution to the population increase during the XVIIth century in the Labourd bask province; they are definitively typical of the churches in the Labourd.

Their access is permitted only during mass times

